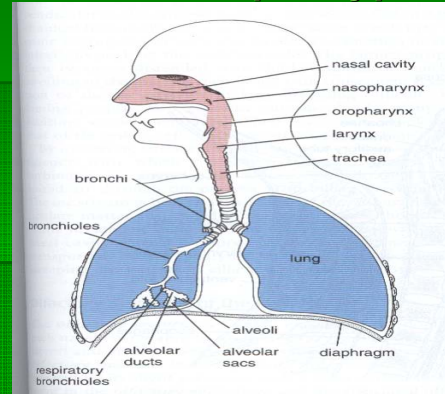


Respiratory System

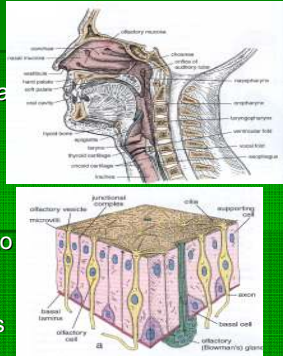
- Nasal cavities
- Pharynx
- Larynx
- Trachea
- Bronchi and Bronchioles

Overview of the respiratory passages



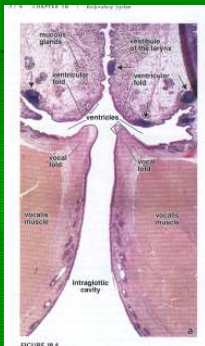
Nasal Cavity

- Part that opens to the environments.
- Portion of the mucosa contains nerve cells that are receptors for the sense of smell.
- Lamina propria highly vascularized.
- Nasal Cavity is linked to Nasopharynx and the pharynx through which the inspired air crosses



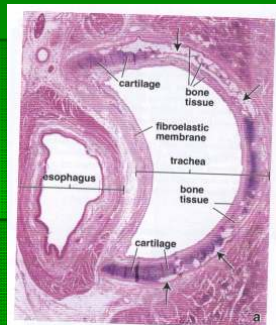
Larynx

- Also called voice box connects nasopharynx with the trachea.
- Walls composed of 9 cartilagenous plates and skeletal muscles.
- Larger cartilage are hyalin, the smaller are elastic cartilage.
- Line with pseudostratified columnar epithelium although the epiglottis is covered by stratified squamous epithelium.
- Cartilage is present in the walls of trachea and bronchi as well



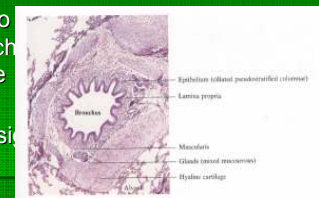
Trachea

- Trachea and its larger branches are similar in structure.
- These tubes are lined with a mucosa consisting of ciliated columnar epithelium and goblets cells.
- Different layers contain the different histologic organization (LN)

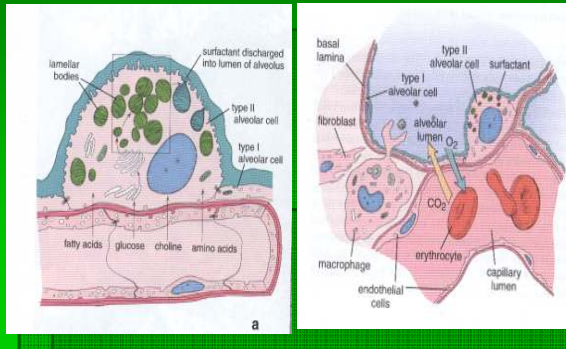


Bronchi and Bronchioles

- Trachea divides to form Bronchi which subsequently give bronchioles.
- The histologic design is similar (LN)



The Respiratory units (Alveoli)



Histopathology

Cancer of the Lung
(Bronchogenic Carcinoma)